

---

## NOTICE

### **Nova Scotia Department of Fisheries and Aquaculture - Administrative Decision**

The Nova Scotia Department of Fisheries and Aquaculture invites members of the public to provide written comment on **Snow Island Salmon Inc.**'s renewal application for Aquaculture Licence and Lease #0833 (AQ#0833) in Ship Harbour, Halifax County. Details of the renewal application are as follows:

#### Details of Renewal Application:

<b>Type:</b> Marine Finfish	<b>Size:</b> 3.35 HA
<b>Number:</b> AQ#0833	<b>Cultivation Method:</b> Marine Cage Cultivation
<b>Applicant:</b> Snow Island Salmon Inc.	<b>Species:</b> Atlantic salmon, Rainbow trout
<b>Location:</b> Ship Harbour, Halifax County	<b>Proposed Term:</b> 10 year Licence/20 year Lease

Written comments may be submitted as follows:

1. By Mail at:  
Aquaculture Administrator  
Nova Scotia Department of Fisheries and Aquaculture  
1575 Lake Road, Shelburne, NS B0T 1W0
2. By Fax at: 902-875-7429
3. By Email at: [Aqua.Admin@novascotia.ca](mailto:Aqua.Admin@novascotia.ca)

Written submissions will be accepted from **12:00 AM on July 4, 2019 to 11:59 PM on August 2, 2019**. Submissions must meet the guidelines outlined at <http://novascotia.ca/fish/aquaculture/public-information/>

Written information provided to the Department as submissions are subject to the protections and disclosures required by the Nova Scotia Freedom of Information and Protection of Privacy Act.

SCHEDULE A  
**GPS COORDINATE INFORMATION SHEET**

Application #: 0833  
Applicant: Snow Island Salmon Inc.  
Location: Ship Harbour County: Halifax  
Hydrographic Chart: 4236 Orthophoto #:  
Dimensions of site: Approx. 275m x 125m Size: Approx. 3.35 ha.

**Approximate Coordinates of Application:**

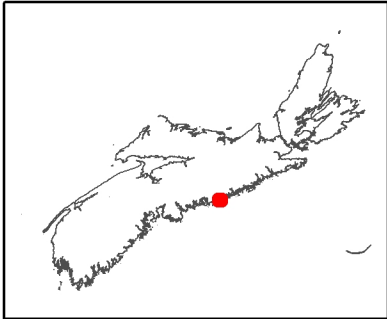
Datum used: NAD 83

Centre coordinates (approx.) Lat. 44° 45' 06.26"  
Long. -62° 45' 53.89"

Corner #1	Lat. 44° 45' 09.24"	Corner #2	Lat. 44° 45' 07.29"
	Long. -62° 45' 59.49"		Long. -62° 45' 47.30"

Corner #3	Lat. 44° 45' 03.40"	Corner #4	Lat. 44° 45' 05.36"
	Long. -62° 45' 48.32"		Long. -62° 46' 00.51"

NOTE: COORDINATES ARE NOT FROM A LEGAL SURVEY



Aquaculture Site

**0833**

Centre

Lat 44° 45' 06.24" Long -62° 45' 53.88"

Corner 1

Lat 44° 45' 09.24" Long -62° 45' 59.49"

Corner 2

Lat 44° 45' 07.28" Long -62° 45' 47.30"

Corner 3

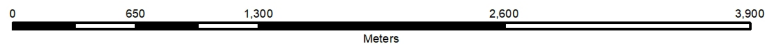
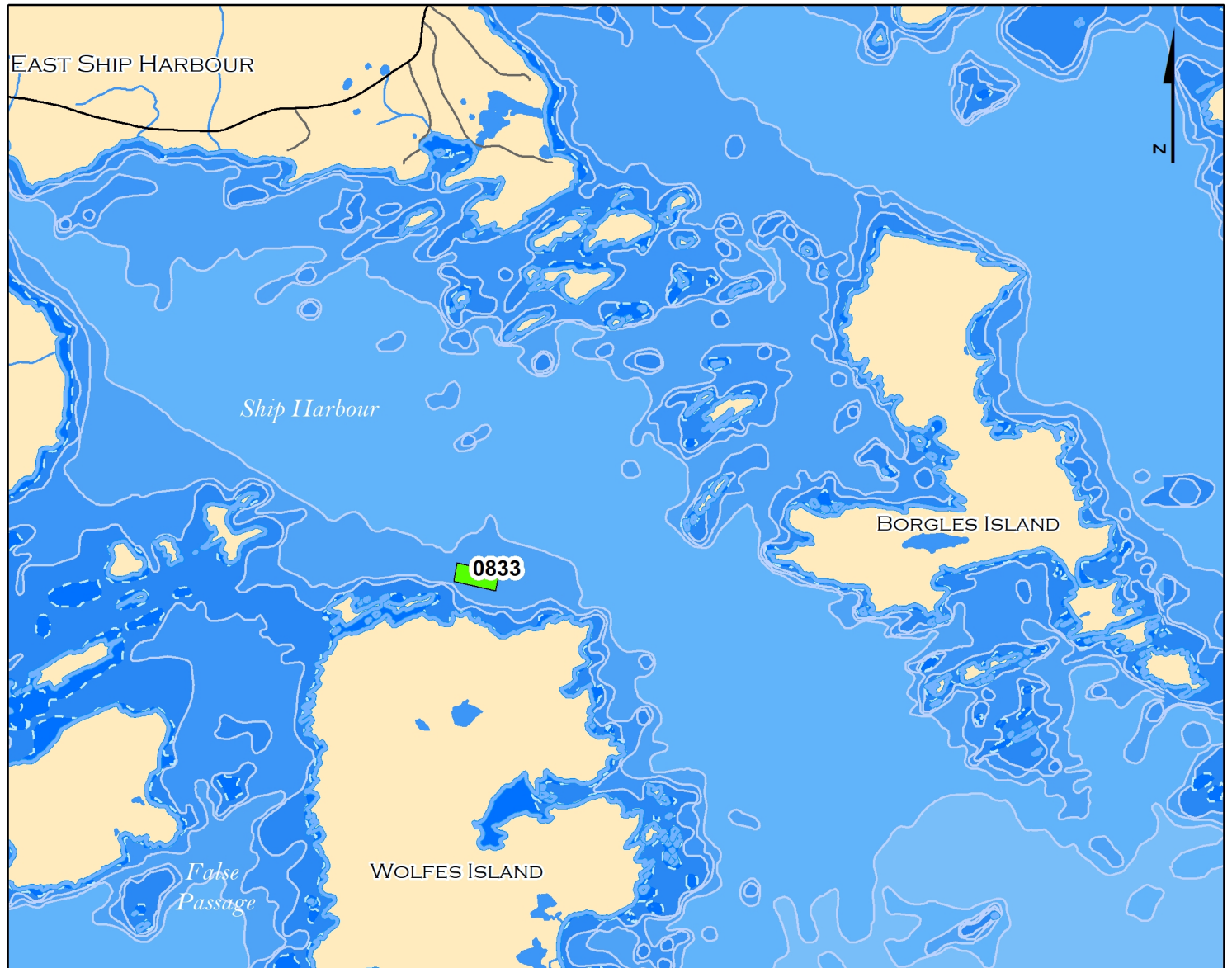
Lat 44° 45' 03.40" Long -62° 45' 48.32"

Corner 4

Lat 44° 45' 05.36" Long -62° 46' 00.51"

DATUM NAD 83

The above coordinates  
are not from a legal survey



**Application Information**

Proponent : Snow Island Salmon Inc.  
 Site Location : Ship Harbour  
 Dimensions : Approx. 275m x 125m  
 Area : Approx. 3.35 ha

- Renewal Application
- Other Issued Lease
- OMHW Mark
- Low Water Mark
- NS Bathymetry

Species:  
Atlantic Salmon, Rainbow Trout

Culture:  
Suspended

Chart No.

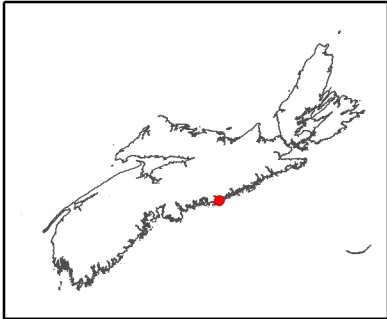
**4236**



**Disclaimer**

This map should not be used for navigation  
or legal purposes. It is intended for general  
reference use only.

MK-0833-MAY-2019

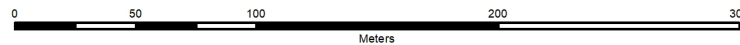


Aquaculture Site

**0833**

Centre  
 Lat 44° 45' 06.24" Long -62° 45' 53.88"  
 Corner 1  
 Lat 44° 45' 09.24" Long -62° 45' 59.49"  
 Corner 2  
 Lat 44° 45' 07.28" Long -62° 45' 47.30"  
 Corner 3  
 Lat 44° 45' 03.40" Long -62° 45' 48.32"  
 Corner 4  
 Lat 44° 45' 05.36" Long -62° 46' 00.51"

DATUM NAD 83  
 The above coordinates  
 are not from a legal survey



**Application Information**

Proponent : Snow Island Salmon Inc.  
 Site Location : Ship Harbour  
 Dimensions : Approx. 275m x 122m  
 Area : Approx. 3.35 ha

- Renewal Application
- Other Issued Lease
- OMHW Mark
- Low Water Mark
- NS Bathymetry

Species:  
 Atlantic Salmon, Rainbow Trout

Culture:  
 Suspended

Chart No.

**4236**



**Disclaimer**

This map should not be used for navigation or legal purposes. It is intended for general reference use only.

MK-0833-MAY-2019