
NOTICE

Nova Scotia Department of Fisheries and Aquaculture - Administrative Decision

The Nova Scotia Department of Fisheries and Aquaculture invites members of the public to provide written comment on **Snow Island Salmon Inc.**'s renewal application for Aquaculture Licence and Lease #0772 (AQ#0772) in **Owl's Head Bay, Halifax County**. Details of the renewal application are as follows:

Details of Renewal Application:

Type: Marine Finfish	Size: 36.00 HA
Number: AQ#0772	Cultivation Method: Marine Cage Cultivation
Applicant: Snow Island Salmon Inc.	Species: Atlantic salmon, Rainbow trout
Location: Owl's Head Bay, Halifax County	Proposed Term: 10 year Licence/20 year Lease

Written comments may be submitted as follows:

1. By Mail at:
Aquaculture Administrator
Nova Scotia Department of Fisheries and Aquaculture
1575 Lake Road, Shelburne, NS B0T 1W0
2. By Fax at: 902-875-7429
3. By Email at: Aqua.Admin@novascotia.ca

Written submissions will be accepted from **12:00 AM on July 4, 2019 to 11:59 PM on August 2, 2019**. Submissions must meet the guidelines outlined at <http://novascotia.ca/fish/aquaculture/public-information/>

Written information provided to the Department as submissions are subject to the protections and disclosures required by the Nova Scotia Freedom of Information and Protection of Privacy Act.

SCHEDULE A
GPS COORDINATE INFORMATION SHEET

Application #: 0772
Applicant: Snow Island Salmon Inc.
Location: Owls Head Bay County: Halifax
Hydrographic Chart: 4236 Orthophoto #:
Dimensions of site: Approx. 500m x 720m Size: Approx. 36.00 Ha

Approximate Coordinates of Application:

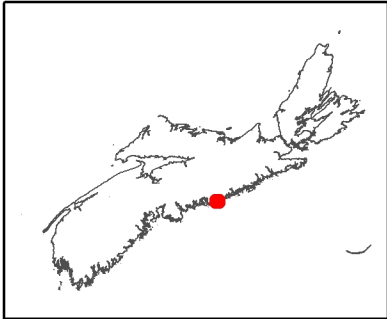
Datum used: NAD 83

Centre coordinates (approx.) Lat. 44° 44' 12.63"
Long. -62° 48' 29.23"

Corner #1	Lat. 44° 44' 04.56"	Corner #2	Lat. 44° 44' 01.23"
	Long. -62° 48' 16.00"		Long. -62° 48' 38.24"

Corner #3	Lat. 44° 44' 24.06"	Corner #4	Lat. 44° 44' 27.39"
	Long. -62° 48' 45.09"		Long. -62° 48' 22.71"

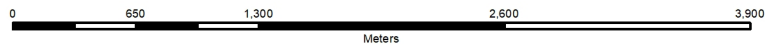
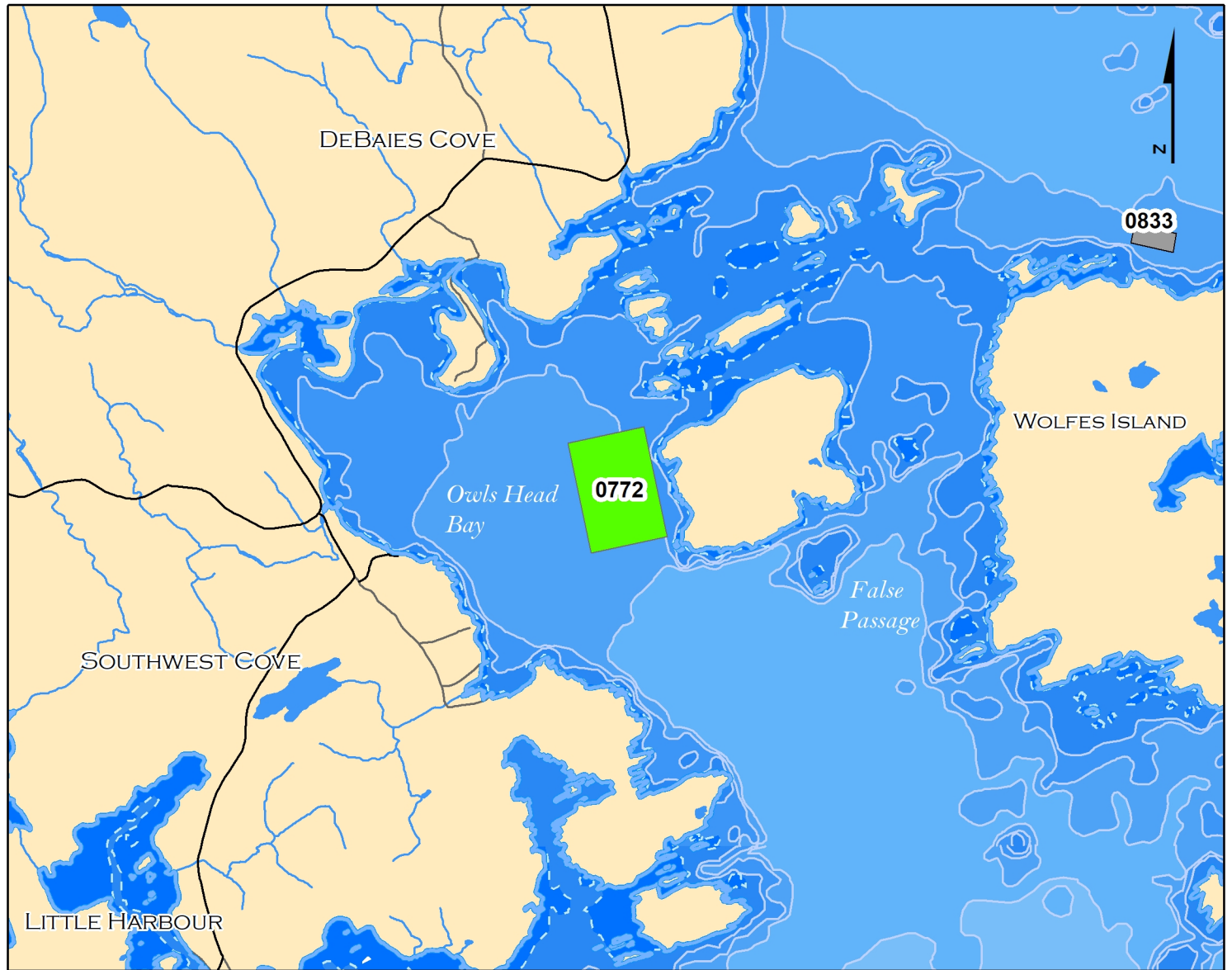
NOTE: THESE COORDINATES ARE NOT FROM A LEGAL SURVEY.



Aquaculture Site
0772

Centre
 Lat 44° 44' 12.63" Long -62° 48' 29.23"
 Corner 1
 Lat 44° 44' 04.56" Long -62° 48' 16.00"
 Corner 2
 Lat 44° 44' 01.23" Long -62° 48' 38.24"
 Corner 3
 Lat 44° 44' 24.06" Long -62° 48' 45.09"
 Corner 4
 Lat 44° 44' 27.39" Long -62° 48' 22.71"

DATUM NAD 83
 The above coordinates
 are not from a legal survey



Application Information

Proponent : Snow Island Salmon Inc.
 Site Location : Owls Head Bay
 Dimensions : Approx. 500 m x 720 m
 Area : Approx. 36.00 ha

- Renewal Application
- Other Issued Lease
- OMHW Mark
- Low Water Mark
- NS Bathymetry

Species:
Atlantic Salmon, Rainbow Trout

Culture:
Suspended

Chart No.

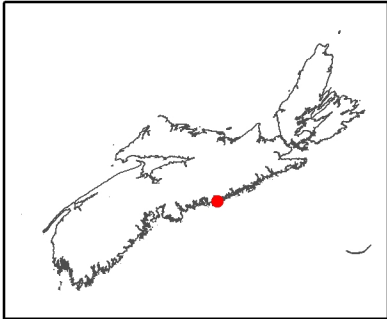
4236



Disclaimer

This map should not be used for navigation or legal purposes. It is intended for general reference use only.

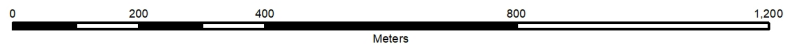
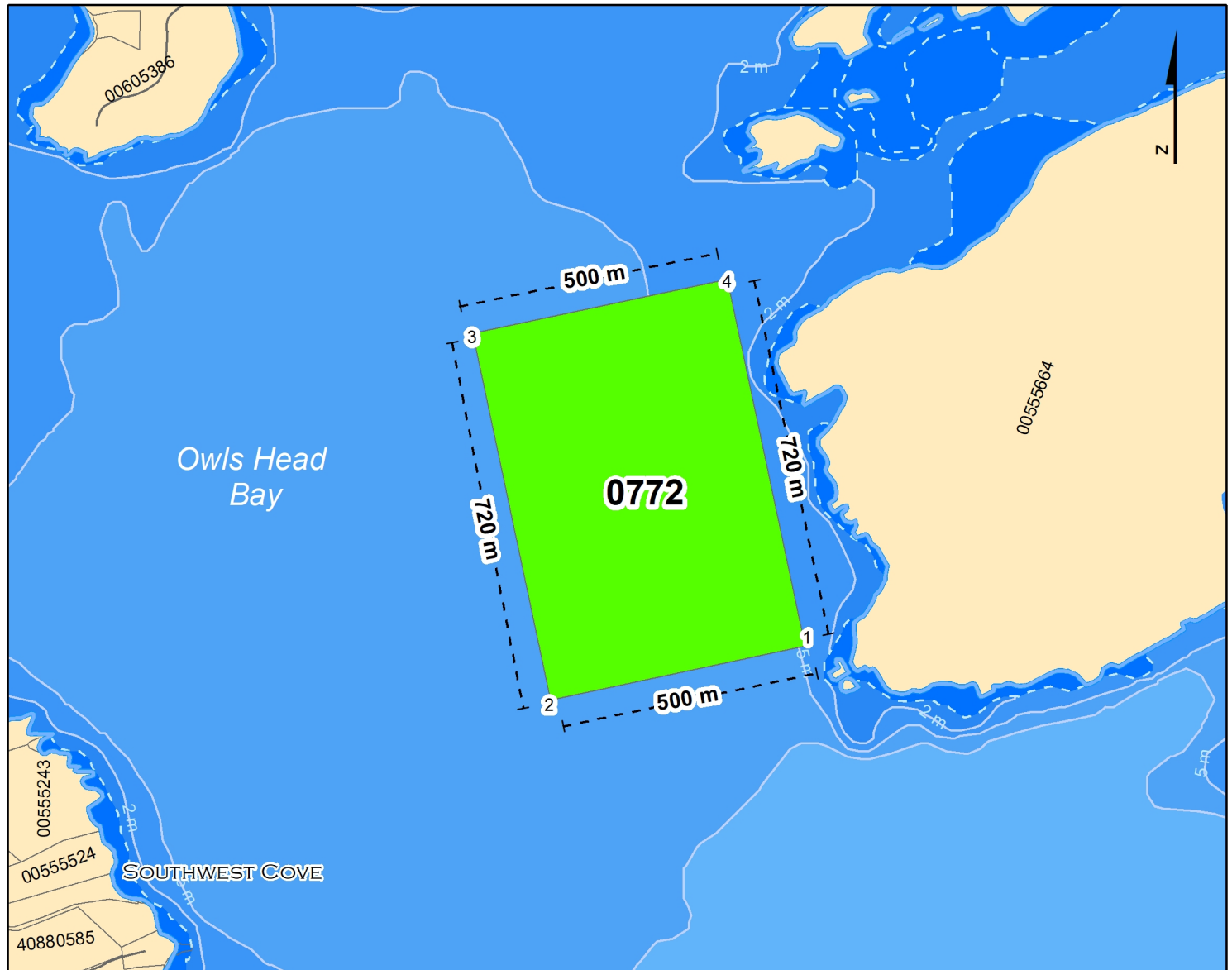
MK-0772-MAY-2019



Aquaculture Site
0772

Center
 Lat 44° 44' 12.63" Long -62° 48' 29.23"
 Corner 1
 Lat 44° 44' 04.56" Long -62° 48' 16.00"
 Corner 2
 Lat 44° 44' 01.23" Long -62° 48' 38.24"
 Corner 3
 Lat 44° 44' 24.06" Long -62° 48' 45.09"
 Corner 4
 Lat 44° 44' 27.39" Long -62° 48' 22.71"

DATUM NAD 83
 The above coordinates
 are not from a legal survey



Application Information

Proponent : Snow Island Salmon Inc.
 Site Location : Owls Head Bay
 Dimensions : Approx. 500 m x 720 m
 Area : Approx. 36.00 ha

- Renewal Application
- Other Issued Lease
- Property Boundary
- OMHW Mark
- Low Water Mark
- NS Bathymetry

Species:
Atlantic Salmon, Rainbow Trout

Culture:
Suspended

Chart No.
4236



Disclaimer

This map should not be used for navigation or legal purposes. It is intended for general reference use only.

MK-0772-MAY-2019